



Texas-Brazos Chapter



AATSP
American Association of Teachers
of Spanish & Portuguese • Est. 1917

POSTER CONTEST

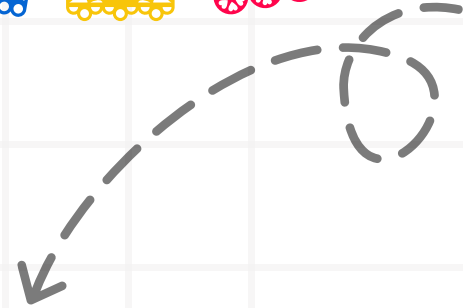


2025

Coordinadoras Marilia Amat-Baralt & Cheryl Fuentes

Email: AATSPBrazoscontests@gmail.com





POSTER CONTEST MISSION STATEMENT



Poster Contest Mission Statement:

To celebrate and promote cultural appreciation, language learning, creativity, celebration of diversity, and global connections through student art.

llll





2025 THEME



Celebrando nuestras raíces y culturas en el corazón del universo



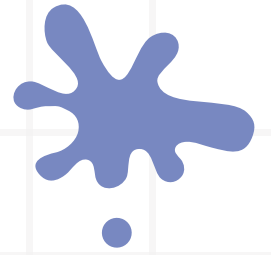
Celebrating our roots and cultures in the heart of the universe



Celebrando nossas raízes e culturas no coração do universo

lll

POSTER CONTEST CATEGORIES



Can be **drawn** using pencils, markers, crayons, etc.

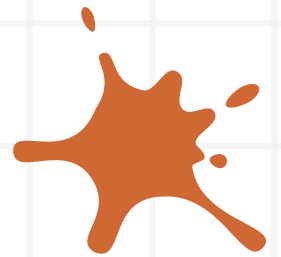
Artwork that is created entirely by hand using a digital drawing tablet and stylus without the use of pre-existing images will be entered into the drawing category



The artist must create all elements of the artwork by drawing by hand using a stylus or using other writing tools on paper.



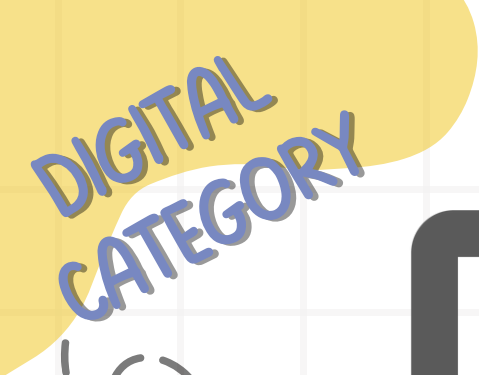
No elements of the artwork should be created through photo manipulation, such as cutting, pasting, or blending existing images.



Digital tools for enhancing hand-drawn elements (e.g., brushes, layers, effects) are permitted as long as they are applied to hand-drawn content.

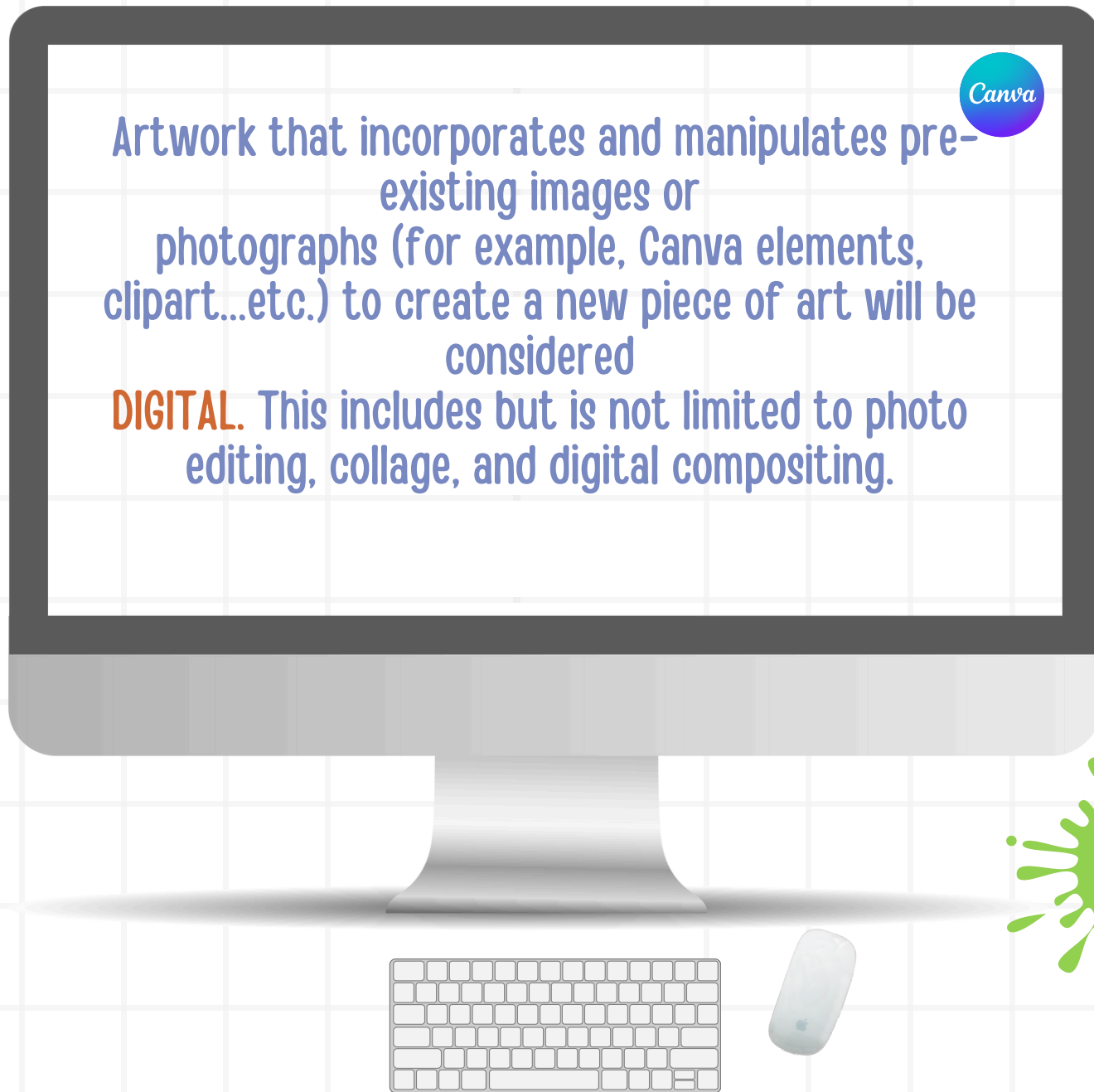
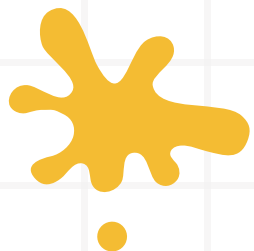
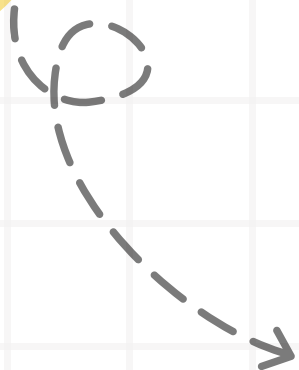


D
R
A
W
I
N
G



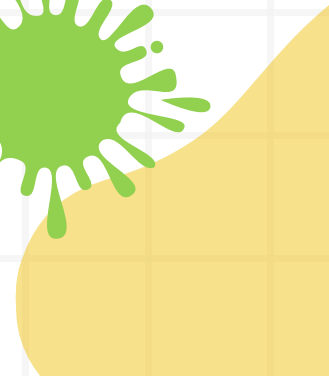
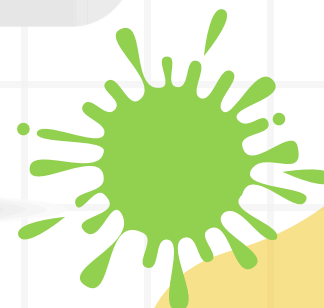
DIGITAL CATEGORY

POSTER CONTEST CATEGORIES



Artwork that incorporates and manipulates pre-existing images or photographs (for example, Canva elements, clipart...etc.) to create a new piece of art will be considered

DIGITAL. This includes but is not limited to photo editing, collage, and digital compositing.



DIGITAL CATEGORY

ADDITIONAL CRITERIA FOR DIGITAL CATEGORY:



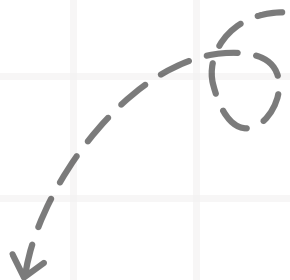
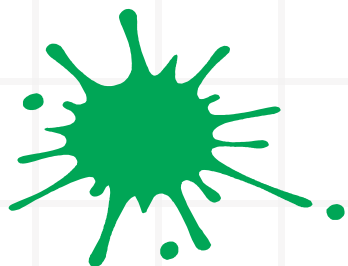
The artist may use pre-existing images or photographs as part of the artwork.



Techniques such as cutting, pasting, layering, blending, and altering images are permitted.



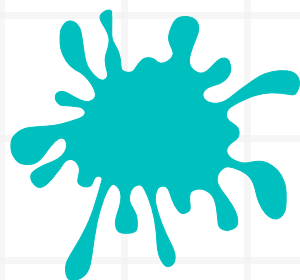
Use of digital tools for photo editing and manipulation (e.g., Photoshop, GIMP) is permitted.



ORIGINALITY



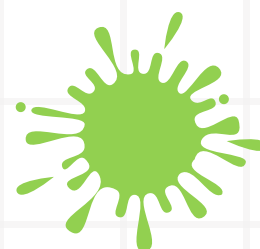
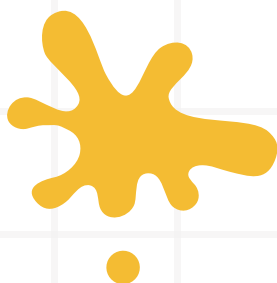
- All submitted artwork must be original and created specifically for this contest.
- Plagiarism or unauthorized use of another artist's work is strictly prohibited.
- Depictions of cartoon, video game, movie, television, or theme characters, or recreations of past poster designs do not constitute creativity or originality.
- Absolutely no copyrighted images, figures, or wording are to be used. AATSP holds no liability for copyright infringement.



ORIGINALITY



- Artwork that is created using artificial intelligence (AI) algorithms or tools, including but not limited to image generators, deep learning models, and neural networks is not allowed.
- The National Contest Director, Committee, and judges reserve the right to request or seek additional information or evidence regarding any piece submitted to the contest.
- If it is determined that an entry was generated by AI, it will be disqualified.



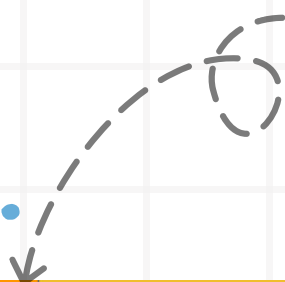
Artist Statement

As part of their submission, students need to **write** at least 5 complete and thoughtful sentences in Spanish/Portuguese (no penalty for errors) or English in which they share the following:

1. A title for their piece (honoring this year's theme)
2. An element and principle of art that was included in their work
3. A studio habit they learned or focused on during the process
4. The “why” of their piece (what helped them decide to draw what they drew)
5. Any other pertinent details they wish to share about their piece or experiences while creating it

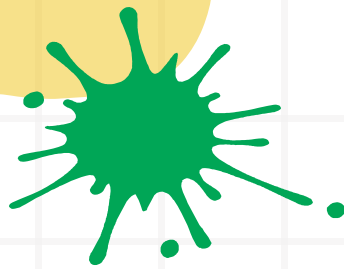


For ideas on writing your statement visit the AATSP [website](#)



HAND DRAWN RUBRIC

Criteria	5	4	3	2	1
Artistic Expression	Exceptional artistic expression; artwork demonstrates mastery, conveying complex emotions and ideas with profound impact.	Strong artistic expression; artwork effectively conveys emotions and ideas, eliciting a strong visual and emotional response.	Adequate artistic expression; artwork conveys emotions and ideas with a moderate level of impact and execution.	Limited artistic expression; some attempt at conveying emotions or ideas, but falls short in impact and execution.	Minimal artistic expression; artwork lacks emotion and visual interest, and execution is poor.
Creativity Uniqueness Originality	Exceptionally original; demonstrates unprecedented creativity, pushing boundaries, and offering a fresh perspective.	High level of originality; showcases creative thinking and innovative ideas, capturing attention through unique elements.	Moderately original; demonstrates creativity with a few unique aspects, but still relies on common artistic conventions.	Limited originality; some creative elements present, but overall lacks uniqueness and fails to stand out.	Highly derivative work; lacks originality and shows minimal creativity or unique elements.
of Theme and Hispanic/Luso-Brazilian Culture	Exceptional interpretation; artwork profoundly explores the theme and deeply integrates Hispanic/Luso-Brazilian cultural aspects with profound insights.	Strong interpretation of the theme and culture; artwork reflects a thoughtful understanding and engages with relevant cultural elements.	Adequate interpretation of the theme and culture; demonstrates a basic understanding but lacks in-depth exploration.	Limited connection to the theme and culture; interpretation lacks depth and understanding.	Little to no connection to the theme of Hispanic/Luso-Brazilian culture; interpretation is unclear or irrelevant.
Artist Statement/ Title	Sophisticated language use; eloquently conveys artistic intentions, enriching the viewer's experience.	Articulate language use; effectively communicates intentions with some sophistication.	Clear language use; helps the viewer's understanding and appreciation of the artwork.	Basic language use; lacks clarity and coherence in conveying artistic intentions.	Language use is unclear, inappropriate, or absent.
Neatness & Execution	Excellent craftsmanship; artwork is meticulously executed and flawlessly presented.	Strong craftsmanship; artwork is neat, well-executed, and carefully presented.	Adequate neatness and presentation; generally well-executed with attention to detail.	Inconsistent craftsmanship; some parts are neat while others lack attention to detail.	Poor craftsmanship and presentation; messy, incomplete, or careless execution.
Requirements	All requirements met and exceeded; Artist Statement is exceptional and theme is incorporated. Title included.	All requirements met, including Artist Statement, theme, title.	All but one requirement met.	More than 1 requirement is not met.	No theme incorporation and/or Artist Statement; title may be missing; contains elements that are not relevant.



DIGITAL RUBRIC



Criteria	5	4	3	2	1
Artistic Expression	Exceptional artistic expression; artwork demonstrates mastery, conveying complex emotions and ideas with profound impact.	Strong artistic expression; artwork effectively conveys emotions and ideas, eliciting a strong visual and emotional response.	Adequate artistic expression; artwork conveys emotions and ideas with a moderate level of impact and execution.	Limited artistic expression; some attempt at conveying emotions or ideas, but falls short in impact and execution.	Minimal artistic expression; artwork lacks emotion and visual interest, and execution is poor.
Creativity Uniqueness Originality	Exceptionally original; demonstrates unprecedented creativity, pushing boundaries, and offering a fresh perspective.	High level of originality; showcases creative thinking and innovative ideas, capturing attention through unique elements.	Moderately original; demonstrates creativity with a few unique aspects, but still relies on common artistic conventions.	Limited originality; some creative elements present, but overall lacks uniqueness and fails to stand out.	Highly derivative work; lacks originality and shows minimal creativity or unique elements.
Interpretation of Theme and Hispanic/Luso-Brazilian Culture	Exceptional interpretation; artwork profoundly explores the theme and deeply integrates Hispanic/Luso-Brazilian cultural aspects with profound insights.	Strong interpretation of the theme and culture; artwork reflects a thoughtful understanding and engages with relevant cultural elements.	Adequate interpretation of the theme and culture; demonstrates a basic understanding but lacks in-depth exploration.	Limited connection to the theme and culture; interpretation lacks depth and understanding.	Little to no connection to the theme or Hispanic/Luso-Brazilian culture; interpretation is unclear or irrelevant.
Artist Statement/ Title	Sophisticated language use; eloquently conveys artistic intentions, enriching the viewer's experience.	Articulate language use; effectively communicates intentions with some sophistication.	Clear language use; helps the viewer's understanding and appreciation of the artwork.	Basic language use; lacks clarity and coherence in conveying artistic intentions.	Language use is unclear, inappropriate, or absent.
Neatness & Execution	Excellent craftsmanship; artwork is meticulously executed and flawlessly presented.	Strong craftsmanship; artwork is neat, well-executed, and carefully presented.	Adequate neatness and presentation; generally well-executed with attention to detail.	Inconsistent craftsmanship; some parts are neat while others lack attention to detail.	Poor craftsmanship and presentation; messy, incomplete, or careless execution.
Requirements	All requirements met and exceeded; Artist Statement is exceptional and theme is incorporated. Title included.	All requirements met, including Artist Statement, theme, title.	All but one requirement met.	More than 1 requirement is not met.	No theme incorporation and/or Artist Statement; title may be missing; contains elements that are not relevant.

HOW TO SUBMIT YOUR WORK



Texas-Brazos Chapter

AATSP

American Association of Teachers
of Spanish & Portuguese • Est. 1917

Teachers are allowed to submit up to 3 entries per category of their students' current work.

Submit the following :

1. A good quality photo of the student's work (JPEG or PNG)
2. The Permission Form (name, etc.)
3. Artist Statement (9-12th grade entries)



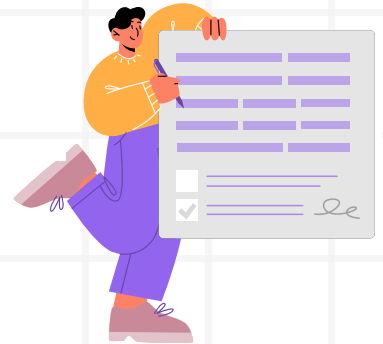
Upload your entries to [TXbrazoscontests](#) and email to cherylfuentesw@yahoo.com



Chapter contest deadline is March 7th by 7:00 PM.

SUBMISSION CRITERIA

- 9th–12th grade must include artistic statement
- Written theme included and creatively incorporated on the poster



- Finalists will be requested to submit entries to AATSP National Contest.



Finalists will be awarded their Chapter prize during the AATSP Texas Brazos Spanish Competition on April 26th.

If you have any questions contact Contest Coordinator Cheryl Fuentes at cherylfuentesw@yahoo.com

